



**Mad River
Radio Club**

The Mad River Radio Club and the SS Affiliated Club Competition

Dave Pruett, K8CC



Mad River Radio Club

MRRC was formed in 1971 by a group of Great Lakes Division contesters expressly for the purpose of winning the SS Affiliated Club Competition against the giants of the day (Potomac Valley Radio Club in VA, Frankford Radio Club in PA, and Murphy's Marauders in CT).



Mad River Radio Club

Shortly after it's formation, MRRC fell into disorganization and disbanded.

However, it was re-formed in 1976 by many of the original members. It re-affiliated with the ARRL, and has participated in the SS Affiliated Club Competition every year since.



Mad River Radio Club

In 30 years of SS Affiliated Club
Competitions, MRRC has:

- Won the Medium Category Gavel four times, the most recently in 2003
- Had an average finish of 3.9 and averaged 40 entries per year
- Finished out of the top five only 7 times



Mad River Radio Club

However, the wheels came off in 2005 -
MRRC finished 3rd but:

- Had its 5th worst points total ever: **2.6M** vs. its 30 year average of **3.7M**
- Averaged its worst ever points/entry: **64,563** vs. its 30 year average of **95,371**
- Was outscored 2:1 in our challenge against the Minnesota Wireless Association



Mad River Radio Club

What happened? Not enough entries?

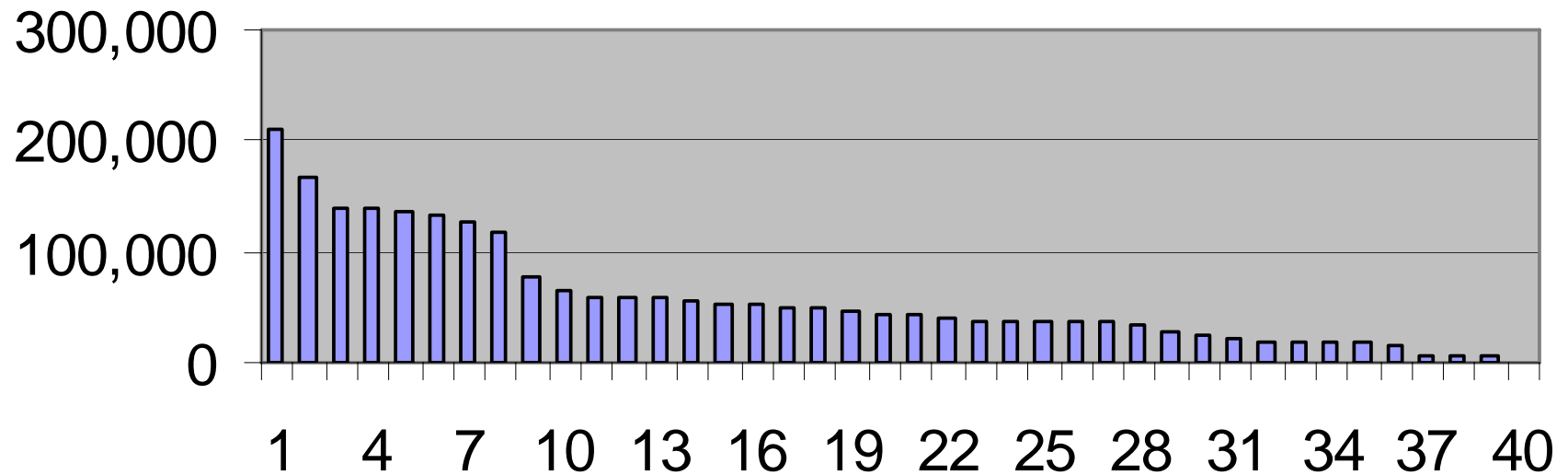
- No - 40 entries in 2005, exactly matches the 30 year average - **however, five of the CW scores were all K8MR from different stations**
- Club had not shrunk significantly – roster showed 82 active members in late 2005, typical for the club – **however, MRRC's scores came from only 27 members (33%)**



Mad River Radio Club

What happened? Not Enough Points

2005 SS MRRC Scores





Mad River Radio Club

What happened? Not Enough Points

- Only one entry over 200K (W8MJ on SSB)
- Only eight entries over 100K

What might have caused this?



Mad River Radio Club

Possible reasons for low scores:

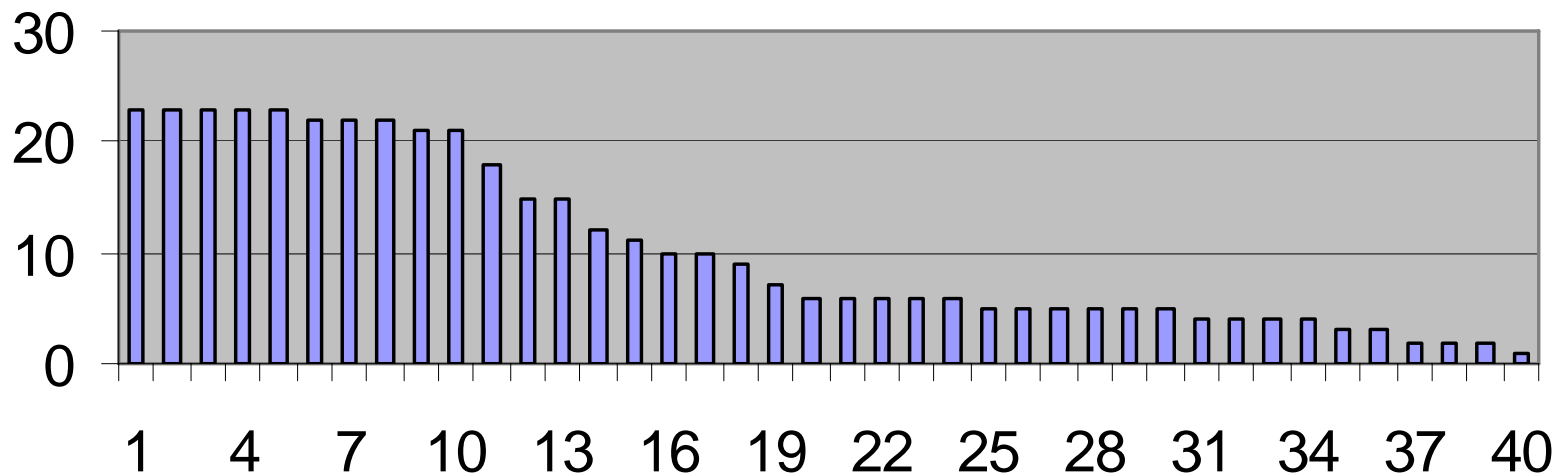
- Low Sunspots; Not a big effect in national domestic contests from W8
- No Big Scores? W8MJ was 10th nationally in SO-A on SSB, W8TM was 11th SO-QRP on CW and N8IE 4th SO-QRP on SSB
- NO top 25 scores in SO-HI, SO-Lo or Multi-op on either mode



Mad River Radio Club

What happened? Not Enough Hours Operated

2005 SS MRRC Hours By Entry

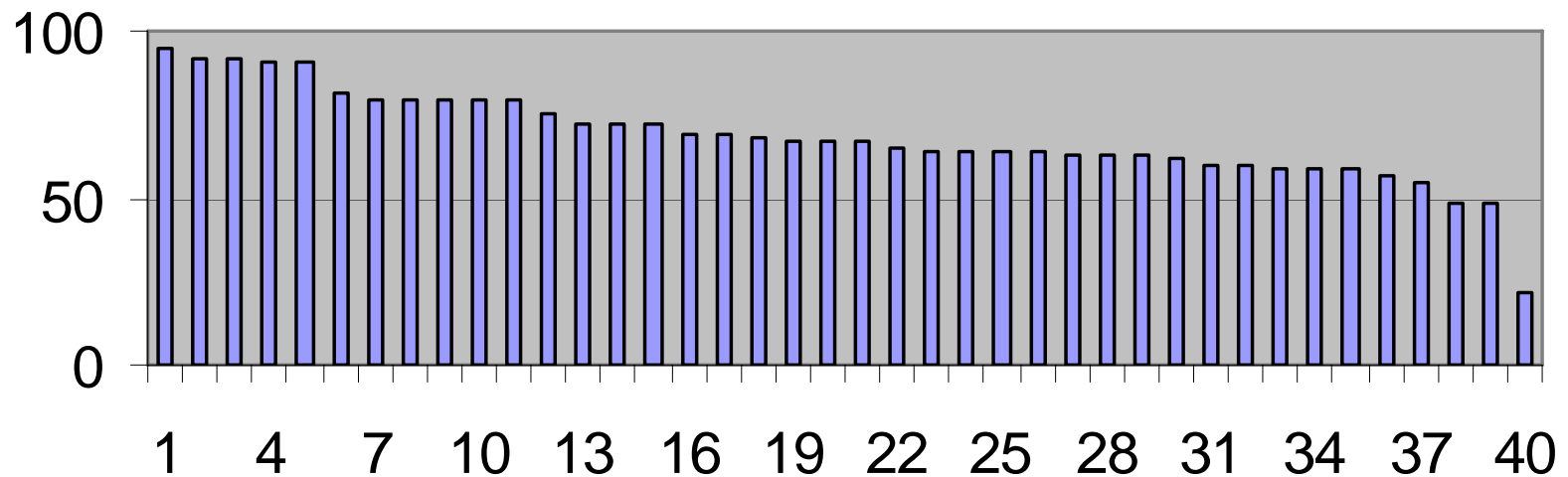




Mad River Radio Club

How old is MRRC?

2005 SS MRRC Checks (Last 2 digits)





Mad River Radio Club

What can MRRC do to improve our score?

- Get More Members Involved; **Only one in three club members were involved in the 2005 SS**
- Encourage More Serious Efforts; **“Time in the chair” leads to “points in the total” – MRRC entries only averaged 10.5 hours each in 2005 (only 44% of the contest)**



Mad River Radio Club

What can MRRC do to improve our member's interest in SS?

- Can club members assist with antenna or station improvements?
- Do members find SS boring, or feel they cannot compete? Would operating or strategy aids, or a "SS University" help this?



Mad River Radio Club

Are MRRC's "little guns" aware of just how well they can do?

- Dipoles at reasonable heights are as good as anything on 80M and 40M
- Lots of QSOs are easily worked on 80M/40M via short skip
- Can be more competitive than in DX contest



Mad River Radio Club

Are MRRC's "SS cynics" aware of the different ways to have fun in SS?

- While SS can be a grind during the second day, QSO rates can be excellent for the first six hours
- Rates hold up well for the first 12 hours; 100K is easily attainable with QRO



Mad River Radio Club

Multi-Op Entries Provide Advantages

- Several part-time operators can staff their best station and result in a bigger score than they would compile individually
- Ops with little or no station get to participate
- Working with other ops can improve operator experience and skills



Mad River Radio Club

Multiple operations
maximize big station
utilization



WD8S and K8BB operating K8BB at K8CC in 2004 SS SSB



**Mad River
Radio Club**

Multiple operations
maximize big station
utilization



K8KHZ and K8UP operated K8CC at K8CC in 2004 SS SSB



**Mad River
Radio Club**

Multiple operations
maximize big station
utilization



K8CC operated K8MAD at K8CC in 2004 SS SSB



Mad River Radio Club

MRRC president W8MJ has proposed appointing a pair of 'SS Captains', one for each MRRC state (MI & OH). These captains would encourage and organize MRRC SS activity in their state, providing assistance, coordinating new multi-ops, and ensuring logs are submitted



**Mad River
Radio Club**

Suggestions, anyone?